

Discover Fair Isle: Cowl

Supplies

Loops & Threads® Impeccable™
(Solids: 4.5 oz/128 g; 245 m/268 yds)
(Ombres: 3.5 oz/100 g; 175 m/192 yds)

- Contrast A: 1 ball (01010 Heather)
- Contrast B: 2 balls (02001 Earth Ombre)
- Size 5 mm (U.S. 8) circular knitting needle 36" (90 cm) long or size needed to obtain gauge.
- Stitch marker
- Darning needle



INTERMEDIATE



MEDIUM



Measurements

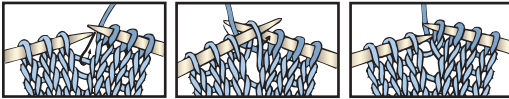
Approx 16" (40.5 cm) high x 30" (76 cm) circumference

Tip

This clever cowl is worked in the round making the fair isle technique super easy since all fair isle stitches are knit only.

Abbreviations

- approx = approximate(ly)
- beg = beginning
- k = knit
- k2tog = knit next 2 stitches together.
- m1 = make 1 st by picking up horizontal loop lying before next stitch and knitting into back of loop



- pat = pattern
- rep = repeat
- rnd(s) = round(s)
- st(s) = stitch(es)
- ws = wrong side

Gauge

19 sts and 22 rows = 4" (10 cm) in fair isle pat.

Instructions

Note: When working from chart, carry yarn not in use loosely across WS of work. The colors are never twisted around one another.

With B, cast on 128 sts. Join in rnd, placing marker on first st.

1st rnd: Knit.

2nd rnd: Purl.

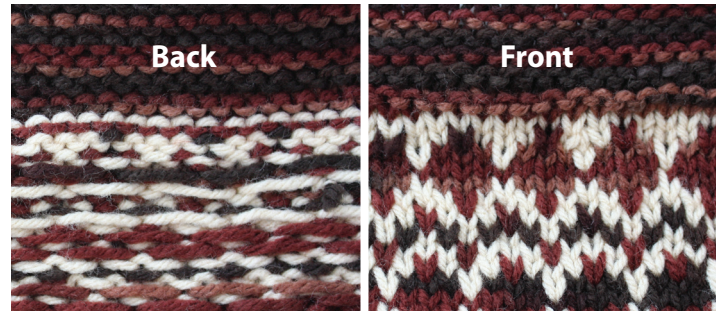
Rep last 2 rnds (garter st) 5 times more.

Next rnd: With A, knit.

Next rnd: *K8. M1. Rep from * around. 144 sts.

Knit Chart to end of chart, reading rnds from **right** to left and noting 4-st rep will be worked 36 times.

Rep rows 1 to 16 of Chart for pat until work from beg measures approx 15" (38 cm), ending with a 16th row of Chart.



Next rnd: With A, *K7. K2tog. Rep from * around. 128 sts. Break A.

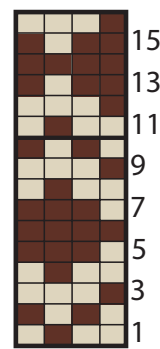
1st rnd: With B, knit.

2nd rnd: Purl.

Rep last 2 rnds 5 times more.

Cast off.

Chart



Key

- Contrast A
- Contrast B

Start here

4-st rep